

CASRI

The background of the slide features a stylized, green-tinted image of several evergreen trees, likely spruce or fir, growing in a forest setting. The trees are positioned behind the main title and subtitle, creating a naturalistic backdrop.

The Central Appalachian
Spruce Restoration Initiative

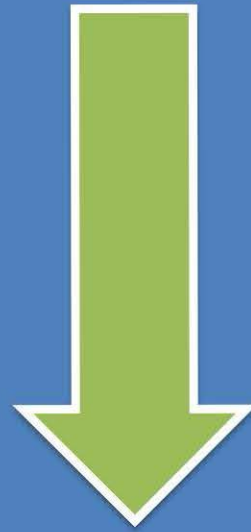
Asheville, NC – 12/4/12

MEMORANDUM OF UNDERSTANDING FOR THE CONSERVATION OF THE RED SPRUCE-NORTHERN HARDWOOD ECOSYSTEM

2006



High Elevation Conservation Working Group or
HECWG

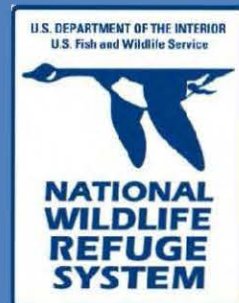


**Central Appalachian Spruce
Restoration Initiative (CASRI)**

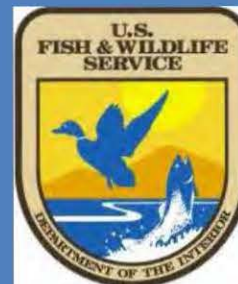
CASRI Partners



State and Federal resource management agencies have partnered with non-profit environmental NGOs to form a working group that shares a vision for restoring the red spruce ecosystem to the highlands of West Virginia



Commitment to Resource



Shared CASRI Coordinator Position



CASRI Structure

- Organically formed through professional partnerships
- Bound loosely by MOU with no hard commitments
- Critical shared coordinator position
- Consensus-based decision making
- Good faith commitments
- In-kind services
- Volunteer labor



On the
ground
work

CASRI Structure

- Heavy reliance on coordinator position
- Participation is usually “in addition to...”
- No formal decision making process – guided by Action Plan
- Prioritizing objectives is a collaborative process
- Releasing group statements or letters of support is collaborative



- Reduced initial fears of commitment from management
- Partners can operate autonomously and still share information
- Avoiding bureaucratic road blocks
- Getting a lot of work done with little resources

What CASRI Has Done:



Formulate Habitat Objectives



- CASRI Action Plan
- Restoration Approach Report
- Modeled Restoration Potential

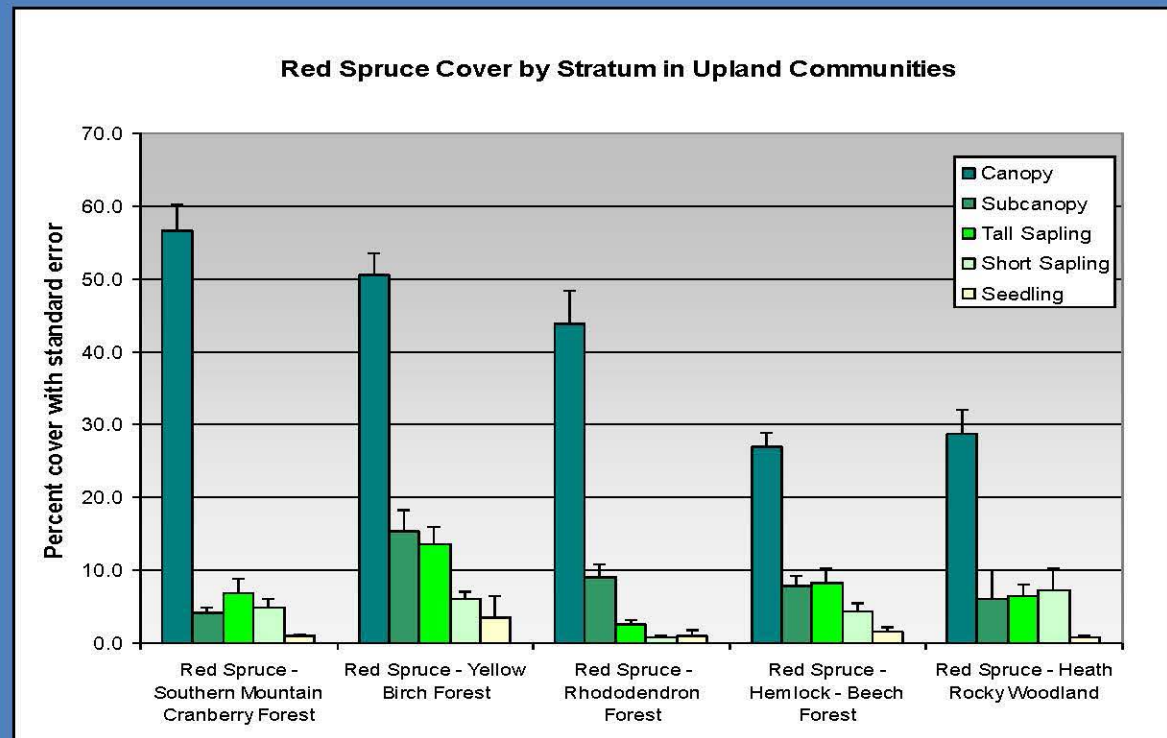
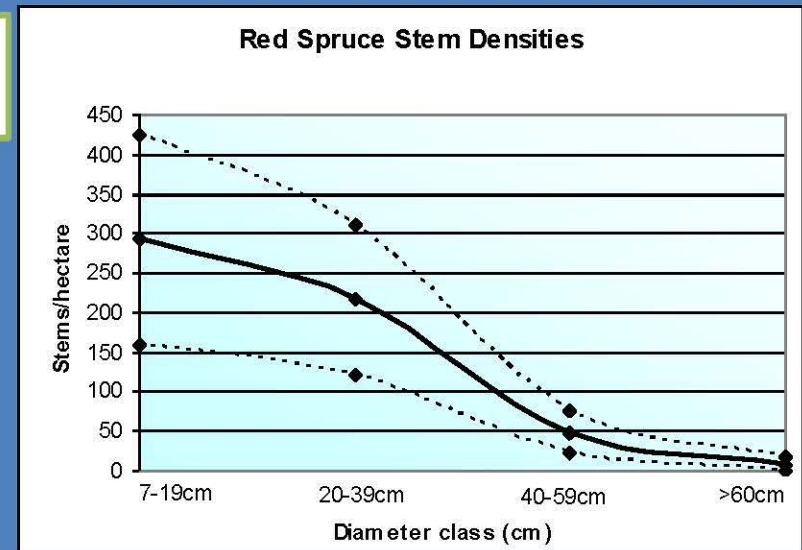


CASRI ACTION PLAN:

- Defines Vision, Goals, Objectives and Strategies
- 10 year time frame
- Provides focus for the working group and aids in funding

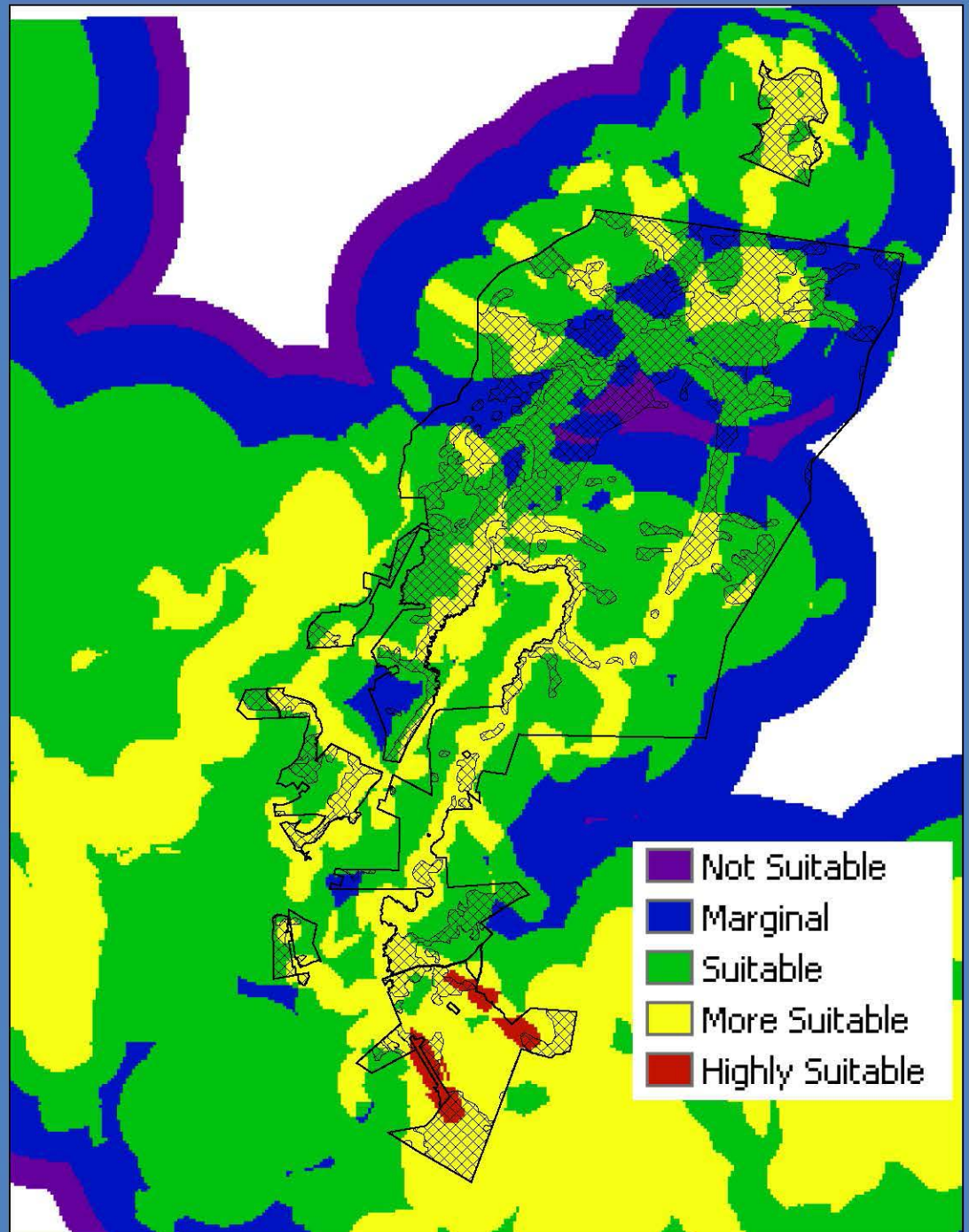
CASRI Restoration Approach

- Defines what we mean by restoration
- Establishes target plant communities
- Identifies restoration actions from a variety of starting conditions
- Living document



Spruce Restoration Suitability

- Weighted by ecological factors
- Allows refuge to plan future management
- Puts restoration where it counts
- Flexible



Conservation Delivery





Conservation Delivery

CASRI Partners have:

- Planted over 110,000 seedlings on > 1000 acres
- Generated over \$2M in grants and in-kind services
- Developed seed source collection and processing capability
- Conducted spruce release on several hundred acres

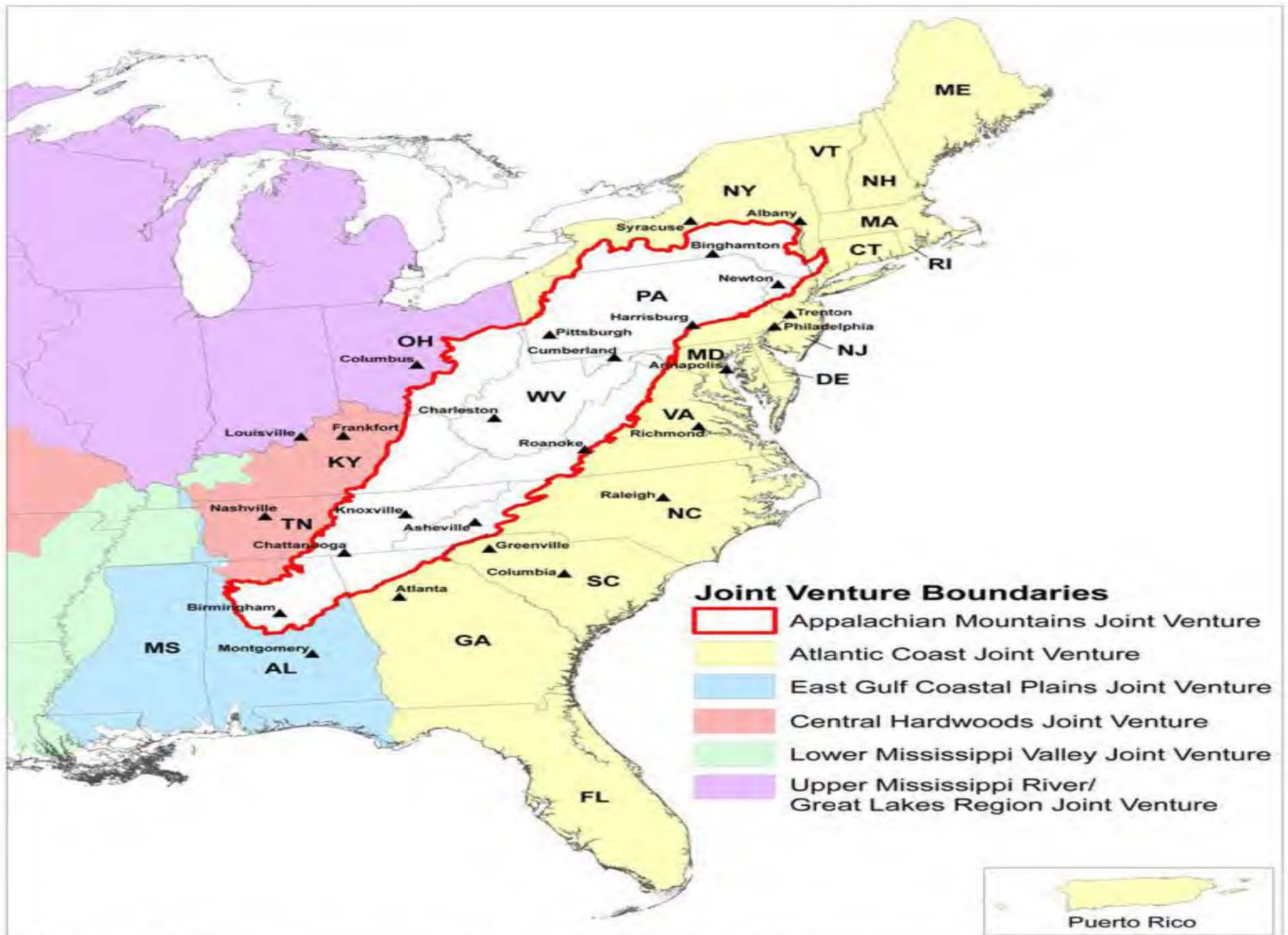


Where are we headed?



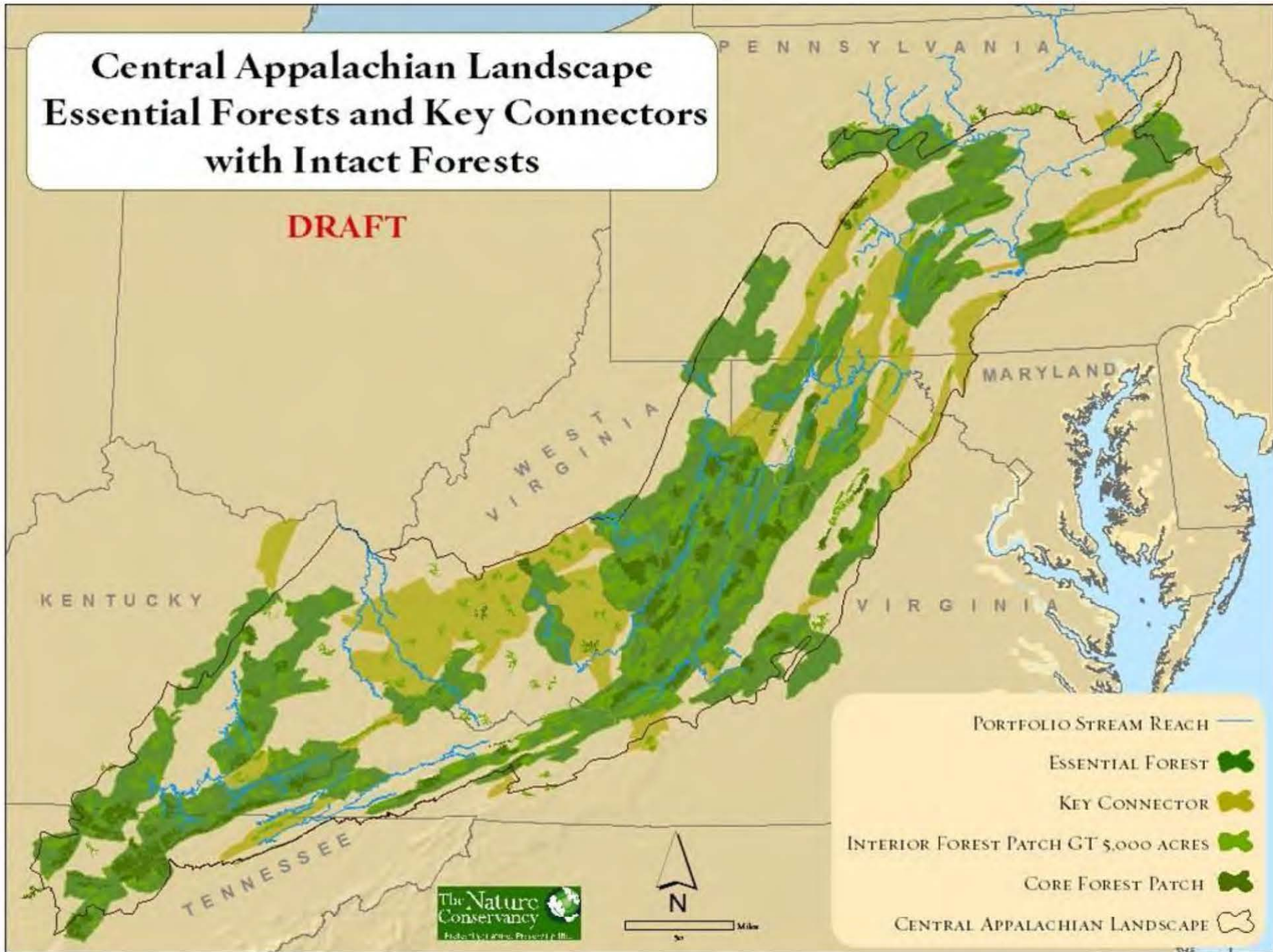
FWS Landscape Conservation Cooperative





Central Appalachian Landscape Essential Forests and Key Connectors with Intact Forests

DRAFT



CASRI

SASRI??

Spruce Restoration
as an Appalachian
Priority

```
graph TD; CASRI[CASRI] --> SR([Spruce Restoration as an Appalachian Priority]); SASRI[SASRI??] --> SR;
```

The diagram consists of a solid blue background. At the top left is a light blue rectangular box with the text 'CASRI' in bold black font. At the top right is a similar light blue rectangular box with the text 'SASRI??' in bold black font. From the bottom center of the 'CASRI' box, a black line extends downwards and then turns right as an arrow pointing towards a central light blue oval at the bottom. Similarly, from the bottom center of the 'SASRI??' box, a black line extends downwards and then turns left as an arrow pointing towards the same central oval. The oval contains the text 'Spruce Restoration as an Appalachian Priority' in black font, arranged in three lines.

Restoration Initiatives

- Great Lakes – 475 million in 2009
- Everglades – 7.8 billion over 30 years
- Chesapeake – 1.5 billion in 2009
- Longleaf Pine – \$20+ million (estimated)

Appalachian Spruce Restoration - ???

Resources to Help Get Started

The Collaboration Cadre (USFS) – may provide facilitation assistance with low cost to form collaborative effort

http://www.fs.fed.us/emc/nfma/collaborative_processes/default.htm

Conservation Connect (NFF) – offers technical assistance for community-based groups and FS employees involved in collaborative efforts on FS lands

<https://www.nationalforests.org/conservation-connect>

USFS National Partnership Office (NPO) – have a lot of resources to help

<http://www.fs.usda.gov/prc>

Other non-profit or private facilitators??

A scenic landscape photograph showing a vast mountain range. In the foreground, there are several dark green evergreen trees. The middle ground features rolling hills and valleys covered in a mix of green and autumn-colored foliage. The background shows more distant, hazy mountain peaks under a blue sky with scattered white clouds. The word "Questions?" is overlaid in white text in the center of the image.

Questions?