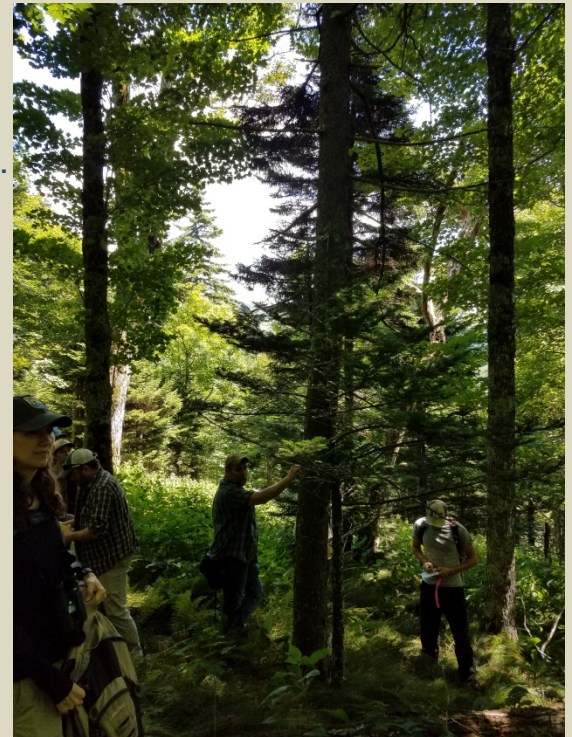


# Land Trust Bird Conservation Initiative

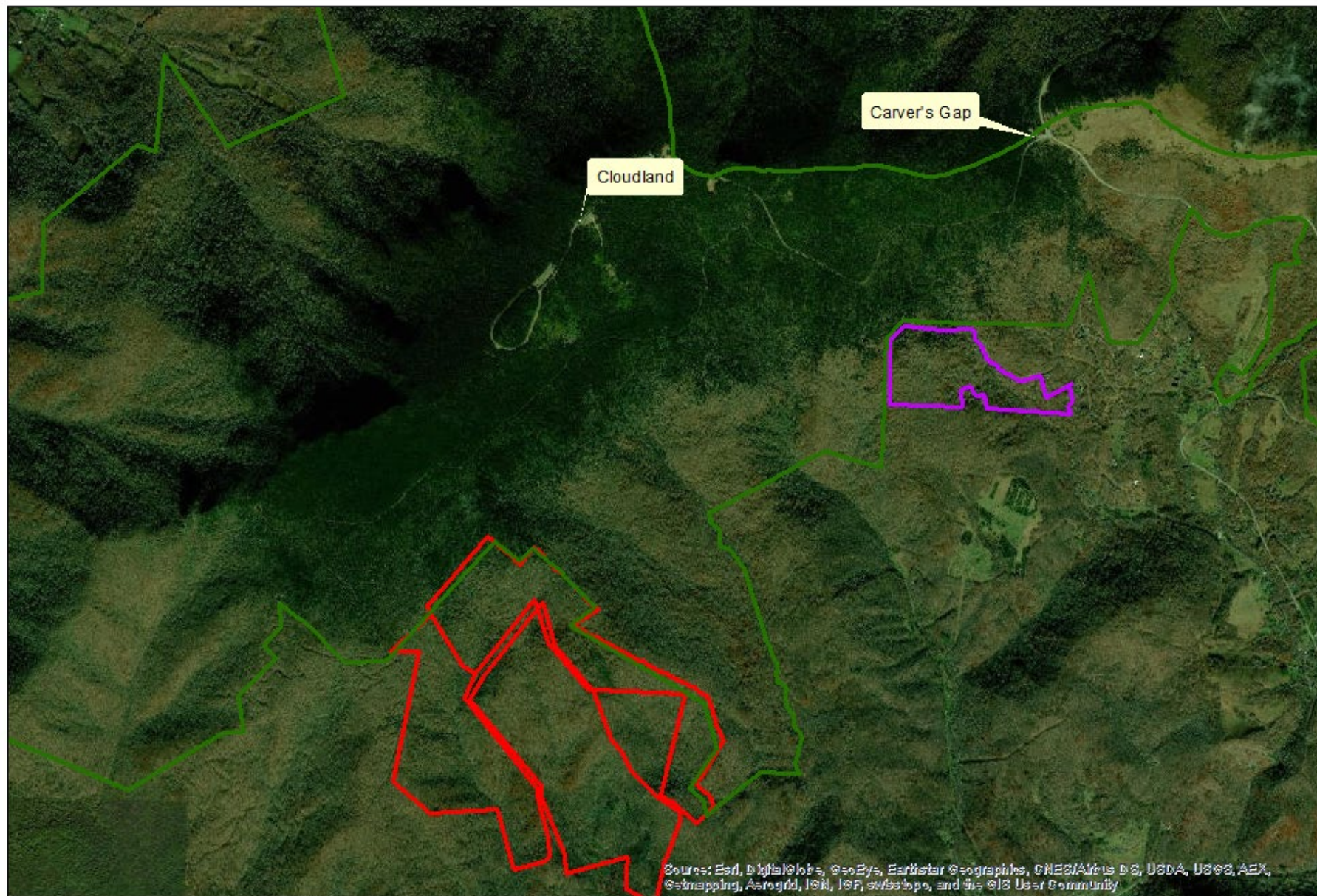
*Cornell Lab of Ornithology - Small Grant Program*

*One objective of the Cornell Land Trust Bird Conservation Initiative is to provide funding to facilitate high priority, bird-focused conservation projects through the small grants program.*

- Annual Grants with Awards \$5-\$20,000
- Prioritize bird conservation, particularly species identified in State Wildlife Action Plans.
- No minimum match requirements
- Required to submit periodic progress reports, final report, etc.
- Bird data associated with funded projects must be entered in eBird.
- Red Spruce (15 acres) and Shortleaf Pine (15 acres) Restoration





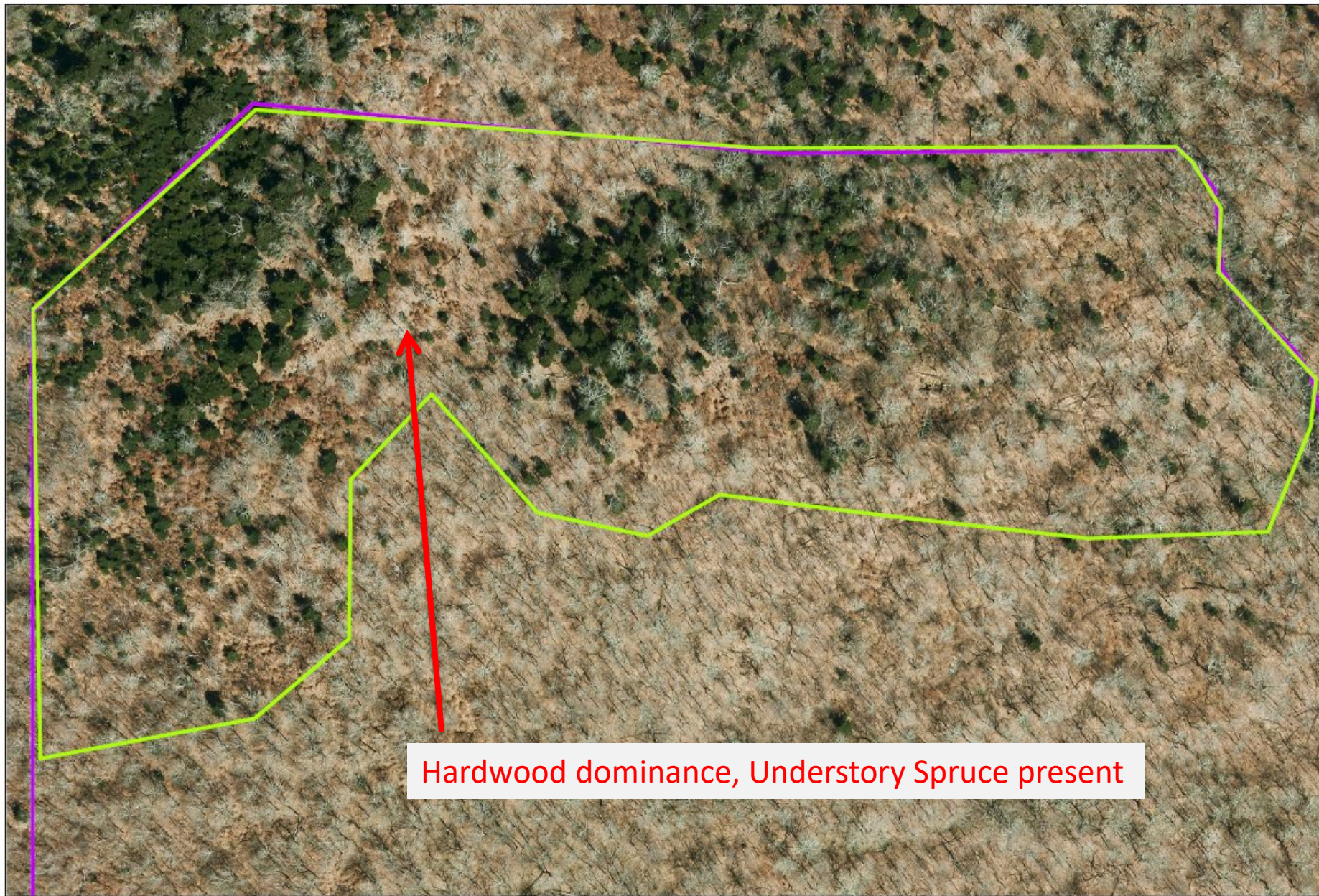


0 0.275 0.55 1.1 Miles

Haw Orchard Ridge  
Spruce-Fir Restoration 2019







Hardwood dominance, Understory Spruce present



0 0.02 0.04 0.08 Miles

Haw Orchard Ridge  
Spruce-Fir Restoration 2019





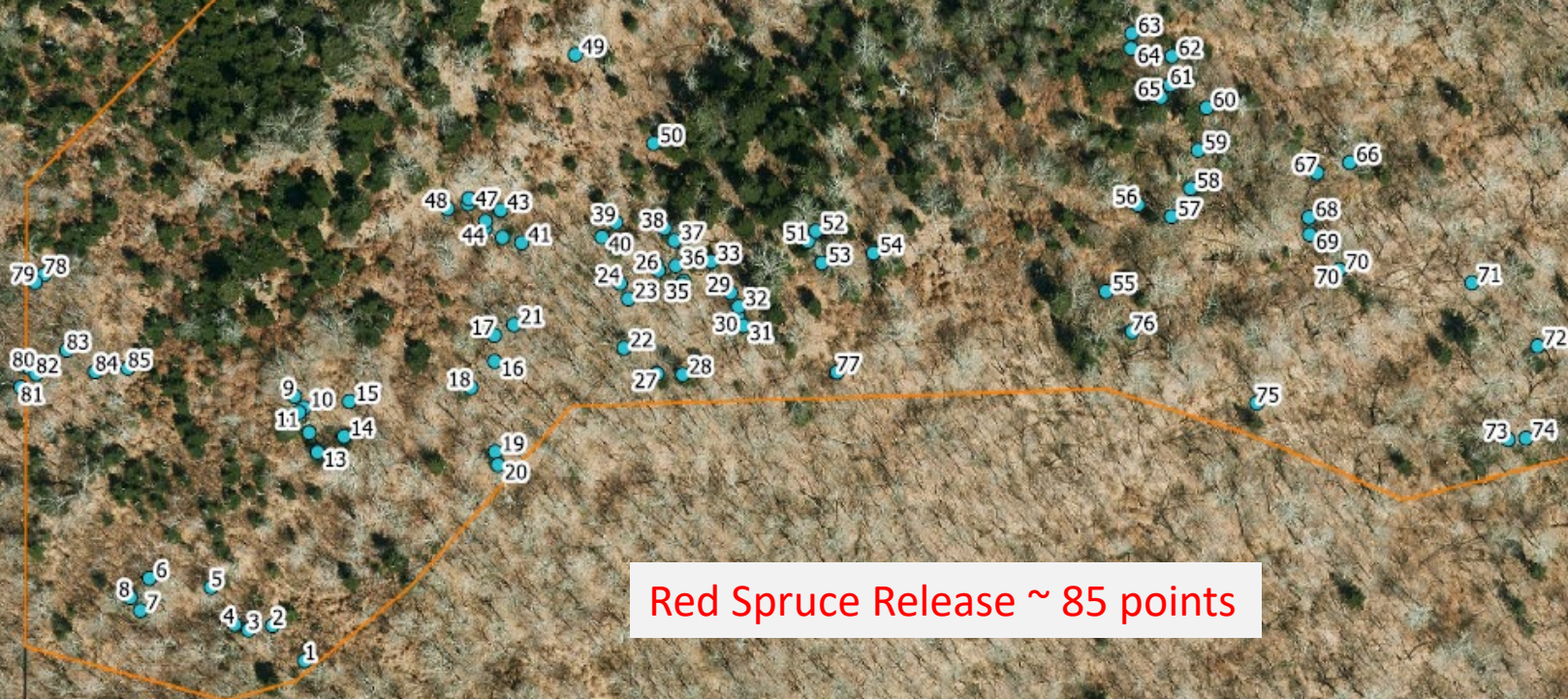




Why is there no seedling  
recruitment???







Red Spruce Release ~ 85 points



*Ground Cover Treatments – Planned for Spring 2020*  
*Anybody got a student?*



Control



Scrape



Inject hardwoods



Scrape + inject

10-15 m along contour, 3-4 m wide; hardwoods killed in 10x3 area plus another few m around plot perimeter