

Spruce-Fir Highlights Nantahala & Pisgah Plan Revision

Southern Appalachian Spruce Restoration Initiative

November 8, 2018

Training Center at Bent Creek Experimental Forest

Jason A. Rodrigue

Ecozone Desired Conditions

- Acknowledgement that the two forests contain a greater proportion of high elevation forest communities
- Approximately 16,000 acres within the ecozone
 - 4,800 feet and above (Roan, Blacks, Balsams)
- Desired Successional Classes

Seral Class	Young	Mid (O)	Mid (C)	Late (O)	Late (C)	Old (O)	Old (C)
Age Class	0 – 35	36 - 70		71 - 120		120 +	
Percent	14 -17	2 - 4	10 - 11	5 - 8	9 - 11	12 - 16	36 - 45

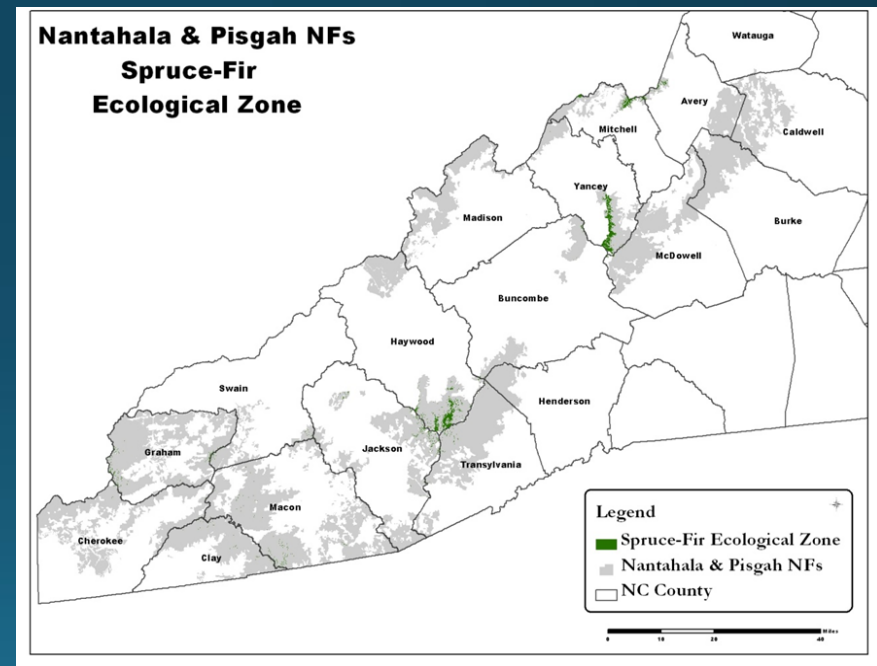
Objectives

Composition:

- Restore 50 acres of the **spruce fir** ecozone per year in order to restore 500 acres (*per decade*)...

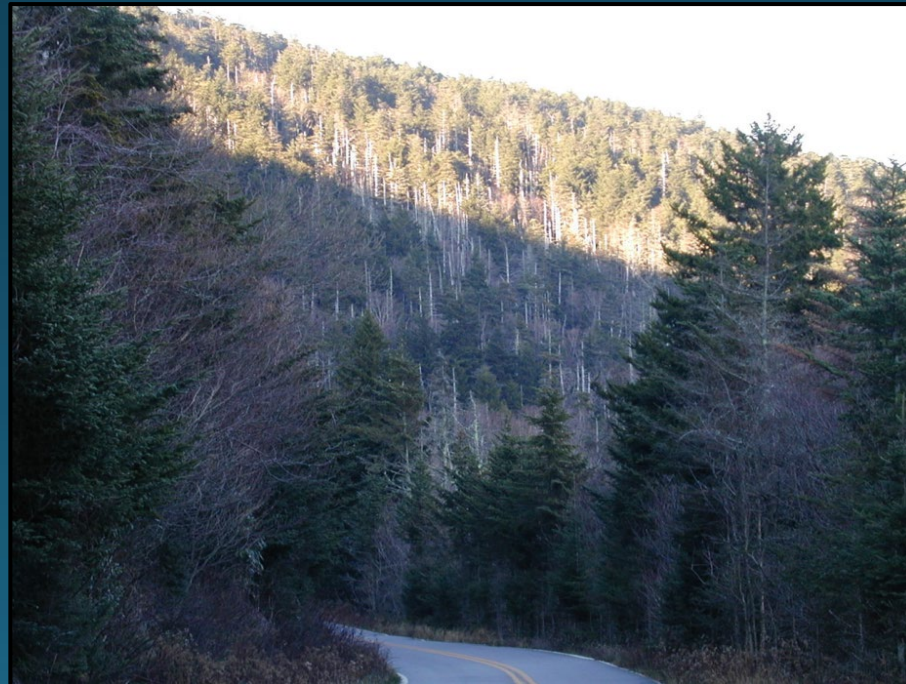
Structure:

- Lacking in all seral classes besides late - closed (Forest Level)
- Departure at the Geographic level is also available.



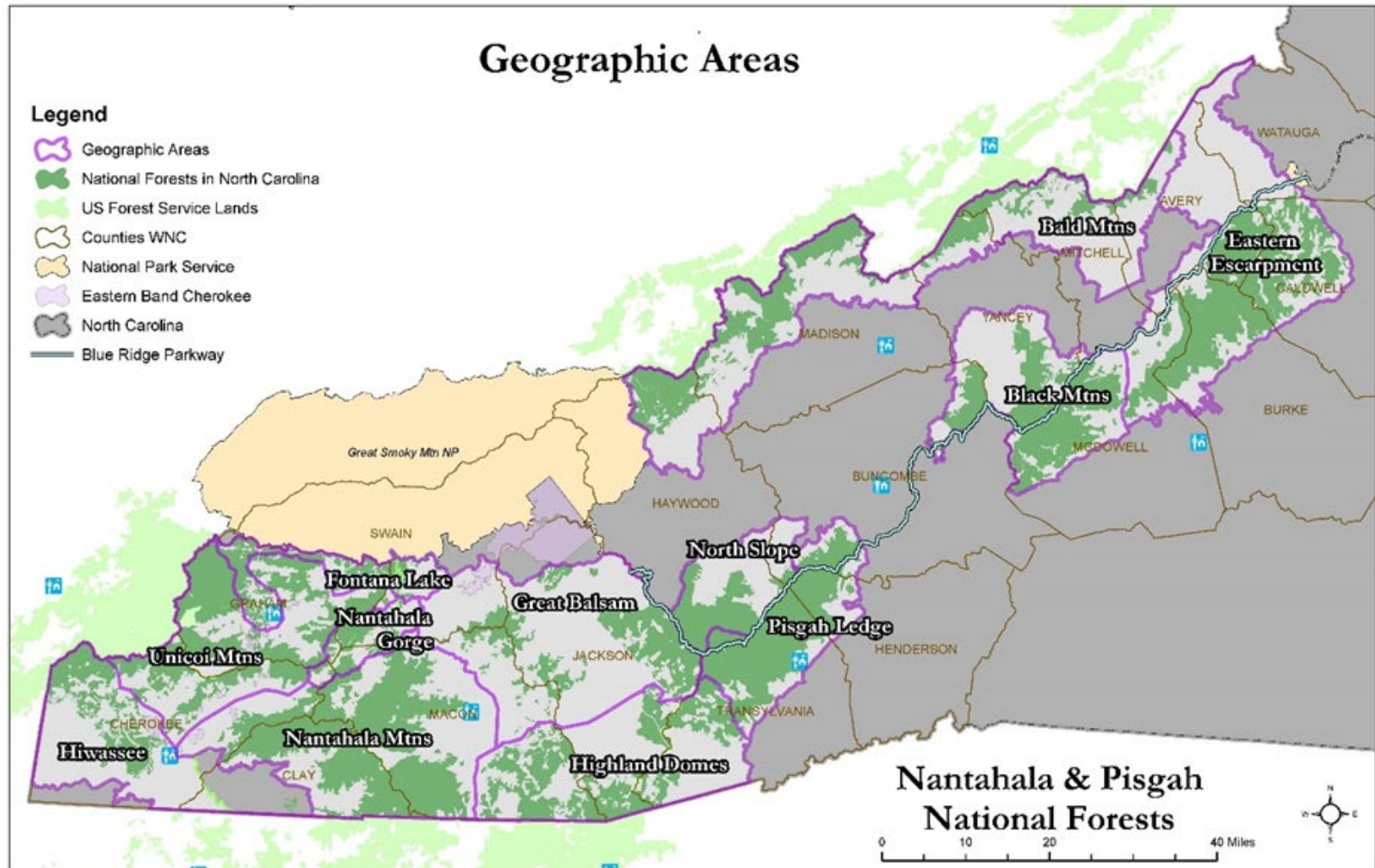
Management Approaches

- Prioritize ecozone restoration of shortleaf pine, dry-mesic oak, **spruce fir**, mesic oak, and pine oak heath; as well as off-site white pine and poplar-dominated coves to return these systems to their natural composition.



Geographic Areas

Bald Mountains, Black Mountains, Pisgah Ledge, North Slope, Great Balsam, Nantahala Mountains, Unicoi Mountains



Geographic Areas

- Emphasize restoration of spruce-fir habitat to maintain the health and resiliency of this critical forest type in the face of climate change.
- Maintain resilient habitat conditions, particularly in spruce-fir and northern hardwood forests for the endangered Carolina northern flying squirrel, spruce fir moss spider, and rock gnome lichen.
- Partner with interested Tribes and non-government organizations for spruce-fir restoration.
- Restoration through creating small gaps and plantings
- Pisgah Ledge: Expand spruce restoration in the Flat Laurel Creek and Graveyard Fields Area.
- Great Balsam: Red spruce bog preservation in Alarka Laurel and Roy Taylor.

Management Areas

- Roan Mountain
 - DC mentions the spruce-fir forest as being one of the many exemplary communities present.
- Scenic Byways
 - Habitat for the Northern Flying Squirrel and associated red spruce communities is sustained or enhanced.

